



DESCRIPTION

The Control Air Type 400 is a general purpose regulator designed to provide reliable performance under variable operating conditions. This quality unit is ideal as an economical alternative for control of industrial process applications. The regulation characteristics of the Type 400 have been proven to be superior to comparable competitive units. Durable materials and corrosion resistant construction provide reliable operation in harsh industrial environments.

FEATURES

- **STABLE OUTPUT AND REPEATABILITY** - Consistently meets control requirements under changing operating conditions.
- **CORROSION RESISTANT CONSTRUCTION** - Die-cast housings are finished with irridite and baked epoxy paint.
- **LOW DROOP AT HIGH FLOW LEVELS** - Aspirator design helps maintain set pressure and minimize "droop" at higher flow levels.
- **HIGH QUALITY LEVEL** - Each regulator receives a pressure, leak and flow test at the factory prior to shipment.
- **LOW COST** - This economical unit is ideal for high volume OEM applications.

APPLICATIONS

The Type 400 is recommended for use with pilot-operated instruments and controllers. It is also ideal for use with process machinery, air chucks, air spray guns, air cylinders and actuators.

SPECIFICATIONS

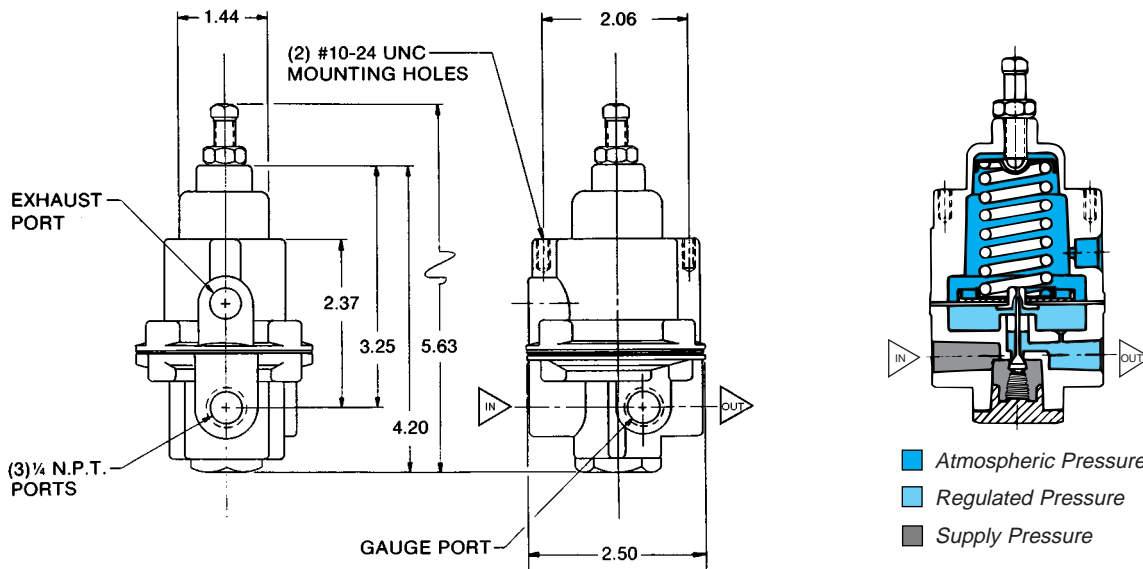
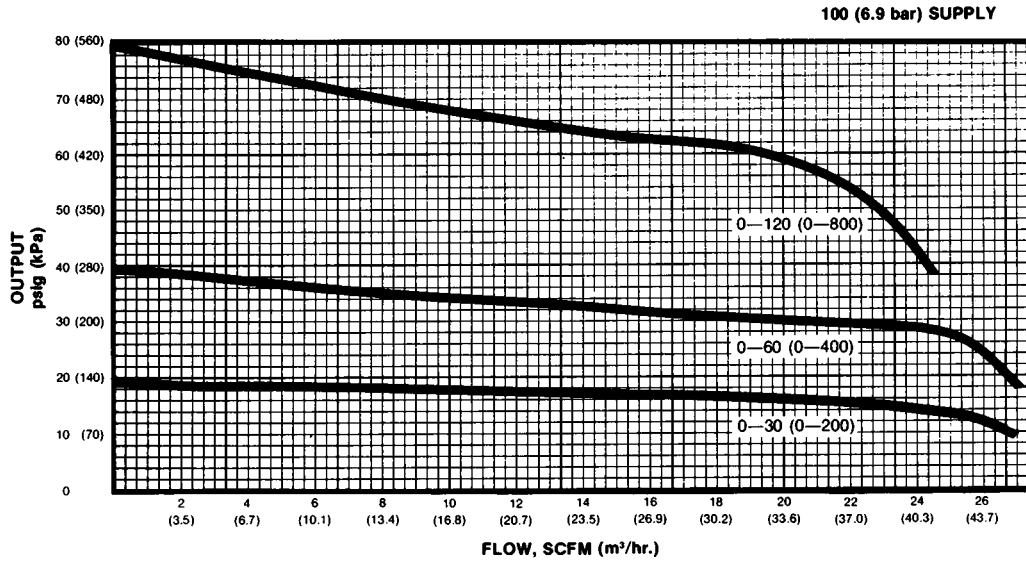
- Flow Capacity**20 SCFM (33.6 m³/hr) at 100 psig (700 kPa) supply - 20 psig (140 kPa) outlet
- Exhaust Capacity**0.1 SCFM (0.17 m³/hr)- downstream pressure 5 psig (35 kPa) above set point
- Sensitivity**1" (2.5 cm) of water
- Effect of Supply Pressure Variation**less than 0.2 psig (1.4 kPa) for 25 psi (170 kPa) change
- Maximum Supply Pressure**250 psig (1700 kPa)
- Air Consumption**less than 6 SCFH (0.17 m³/hr)
- Output Range**0-10 psig (65kPa), 0-30 psig (200 kPa), 0-60 psig (400 kPa), 0-120 psig (800 kPa)
- Port Size**1/4" NPT
- Mounting**Pipe or Panel
- Materials:** Body; diecast aluminum alloy. Diaphragm; nitrile elastomer and nylon fabric. Trim; brass, zinc plated steel, acetal



**TYPE 400
GENERAL SERVICE
PRESSURE REGULATOR**

TYPE 400 GENERAL SERVICE PRESSURE REGULATOR

FLOW CHARACTERISTICS



ORDERING INFORMATION

Type	Port Size (NPT)	Output Range	
		psi	kPa
400-BD	1/4"	0-10	0-65
400-BA	1/4"	0-30	0-200
400-BB	1/4"	0-60	0-400
400-BC	1/4"	0-120	0-800

OPTIONS

Add proper letter onto end of model number.

- G - Pressure Gauge:** 2" face, back mounted. Ranges include 0-30 psig (0-200 kPa), 0-60 psig (0-400 kPa), 0-160 psig (0-100 kPa). When specified with the regulator the correct range will be supplied.
- K - Knob:** to replace square head adjust screw.
- N - Non-Relieving:** for constant flow or downstream pressure relief applications
- E - Tapped Exhaust:** allows captured exhaust air. 1/4" NPT port.
- B - Mounting Bracket:** zinc-plated steel bracket for side mounting
- T - Tamperproof Cover:** prevents casual adjustment of output pressure.
- S - Stainless Steel Adjust Screw:** hex head stainless steel adjust screw for maximum corrosion resistance.
- V - Viton Elastomers:** used where elements in the supply air are particularly destructive to standard Buna-N pintle and diaphragm material.



8 Columbia Drive • Amherst, NH 03031 USA
 Website: www.controlair.com • Email: sales@controlair.com
 603-886-9400 FAX 603-889-1844