



8 Columbia Drive  
Amherst, N.H. 03031  
603-886-9400

## Instructions Pressure Regulators Type-300

These regulators are designed for air service only. Maximum allowable inlet pressure is 250 psi. Operating temperatures are 0 to 160°F. The Type-300 has low capacity internal relief which provides very limited down stream over pressure protection. Note: Non-relieving version does not provide internal relief. To avoid exceeding outlet pressure limits in service a pressure-relieving or pressure-limiting device should be provided.

### **INSTALLATION:**

Install the regulator as close as possible to the instrument or tool it is to service. For best filter drainage orient the drain valve so that it is at the lowest point on the dripwell housing. The words "IN" and "OUT" are cast into the body to indicate the direction of flow.

### **OPERATION:**

Prior to turning on supply air, back off adjusting screw until there is no compression of the range spring. After turning supply pressure on, turn the adjusting screw clockwise to increase outlet pressure.

### **MAINTENANCE:**

- 1) To remove condensate, slowly open drain valve and bleed accumulated liquid.
- 2) To clean filter element
  - a. Shut off supply air
  - b. Drain Condensate
  - c. Remove four corner bolts from bottom of unit
  - d. Remove dripwell housing and filter
  - e. Clean parts and reassemble in reverse order
- 3) To install replacement parts
  - a. Order kit as described in exploded view on reverse side of this sheet
  - b. Shut off supply air. Back out adjusting screw
  - c. Remove four corner bolts from bottom of the unit and four screws on top and remove all parts
  - d. Replace all parts that show excessive wear
  - e. Clean all parts and replace in reverse order

Direct any specific questions to ControlAir at (603) 886-9400.

**LIMITED WARRANTY & DISCLAIMER:**

ControlAir, Inc. products are warranted to be free from defects in materials and workmanship for a period of one year from the date of manufacture, provided said products are used according to ControlAir, Inc. recommended usages. ControlAir, Inc.'s liability is limited to repair of, refund of purchase price paid for, or replacement in kind of, at ControlAir, Inc.'s sole option, any products proved defective. ControlAir, Inc. reserves the right to discontinue manufacture of any product or change product materials, design or specifications without notice.

**Warning:**

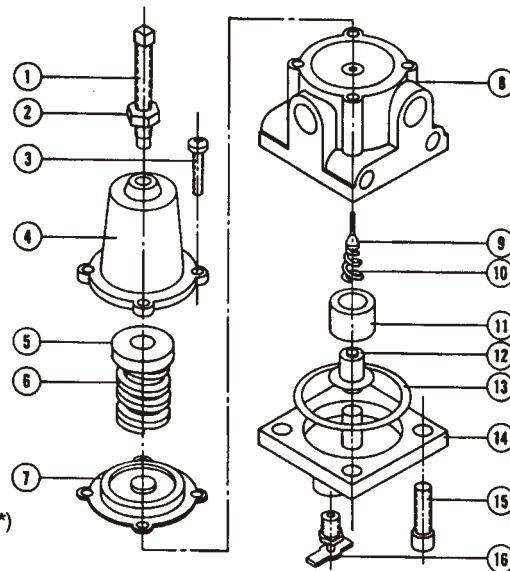
These products are intended for use in industrial compressed-air systems only. Do not use these products where pressures and temperatures can exceed those listed under Specifications.

Before using these products with fluids other than air, for non-industrial applications, life-support systems, or other applications not within published specifications, consult ControlAir, Inc.

**Type 300 Filter Regulator**

- 1. Adjusting Screw
- 2. Locknut
- 3. Bonnet Build Screw
- 4. Bonnet
- 5. Spring Guide
- 6. Range Spring
- \* 7. Diaphragm Assembly
- 8. Body
- \* 9. Pintle Assembly
- \* 10. Pintle Spring
- \* 11. Filter
- 12. Filter Retainer Assembly
- \* 13. Dripwell Gasket
- 14. Dripwell Housing
- 15. Dripwell Build Screw
- 16. Drain Valve

All items marked with an asterisk (\*) will be included in the repair kit. Other parts may be ordered separately by specifying the item number, part name, and the part number of the regulator for which the parts are intended.



**Repair Kits: Part No.**  
**Relieving: 449-871-017**  
**Non-Relieving: 449-871-035**

jrm 441-622-014  
1/00